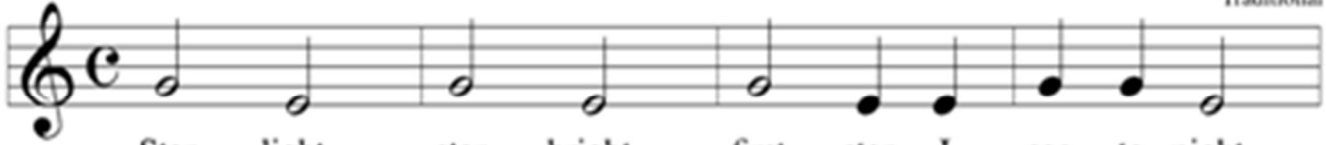


# Starlight

2 bar intro

Traditional



Star - light, star bright, first star I see to - night,



Wish I may, wish I might, have the wish I wish to - night.

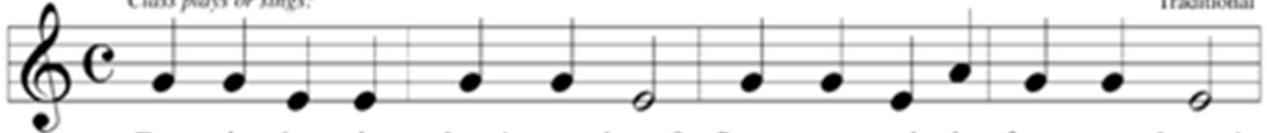


# Doggie Doggie

2 bar intro

*Class plays or sings:*

Traditional



Dog-gie, dog-gie, where's your bone? Some-one stole it from your home!



"Who has my bone?" "I have your bone."

## Slur:

The curved line that connects notes is a slur. This means to play without tonguing. Tongue the first note, then move your fingers to the next note(s) without tonguing.

# Hallelujah Chorus

By G.F. Handel

C — G A G :||  
•• •• •• ••  
•• C C — C C —  
•• •• •• ••  
C B C — B C —||  
•• •• •• •• •• ••

# Harmony for "Hallelujah Chorus"

E — C C C } E — C C C }  
•••• •••• •••• ••••  
GG A G — GG A G —  
•••• •••• •••• •••• •••• ••••  
C D G — G G —  
•••• •••• ••••